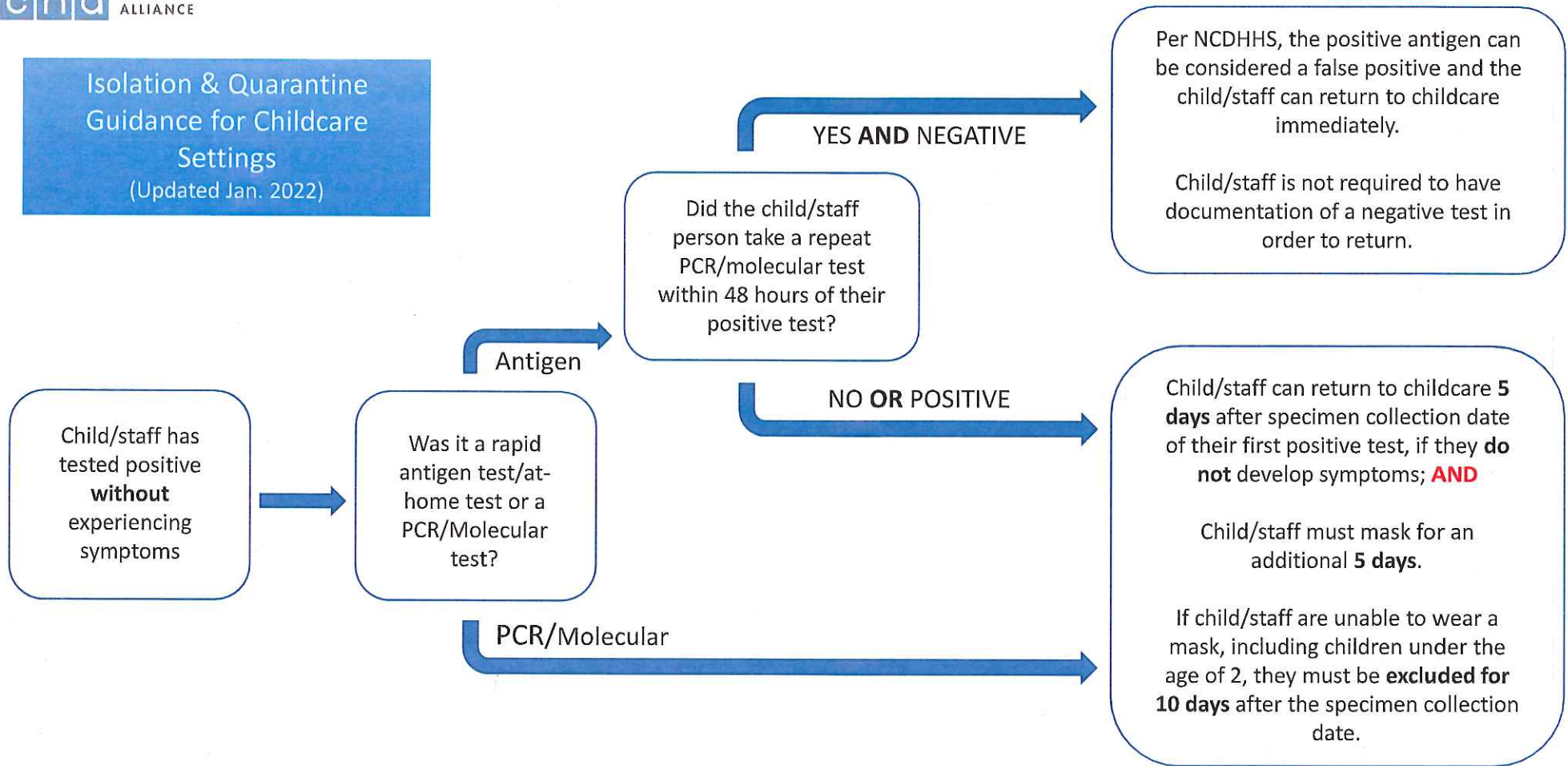
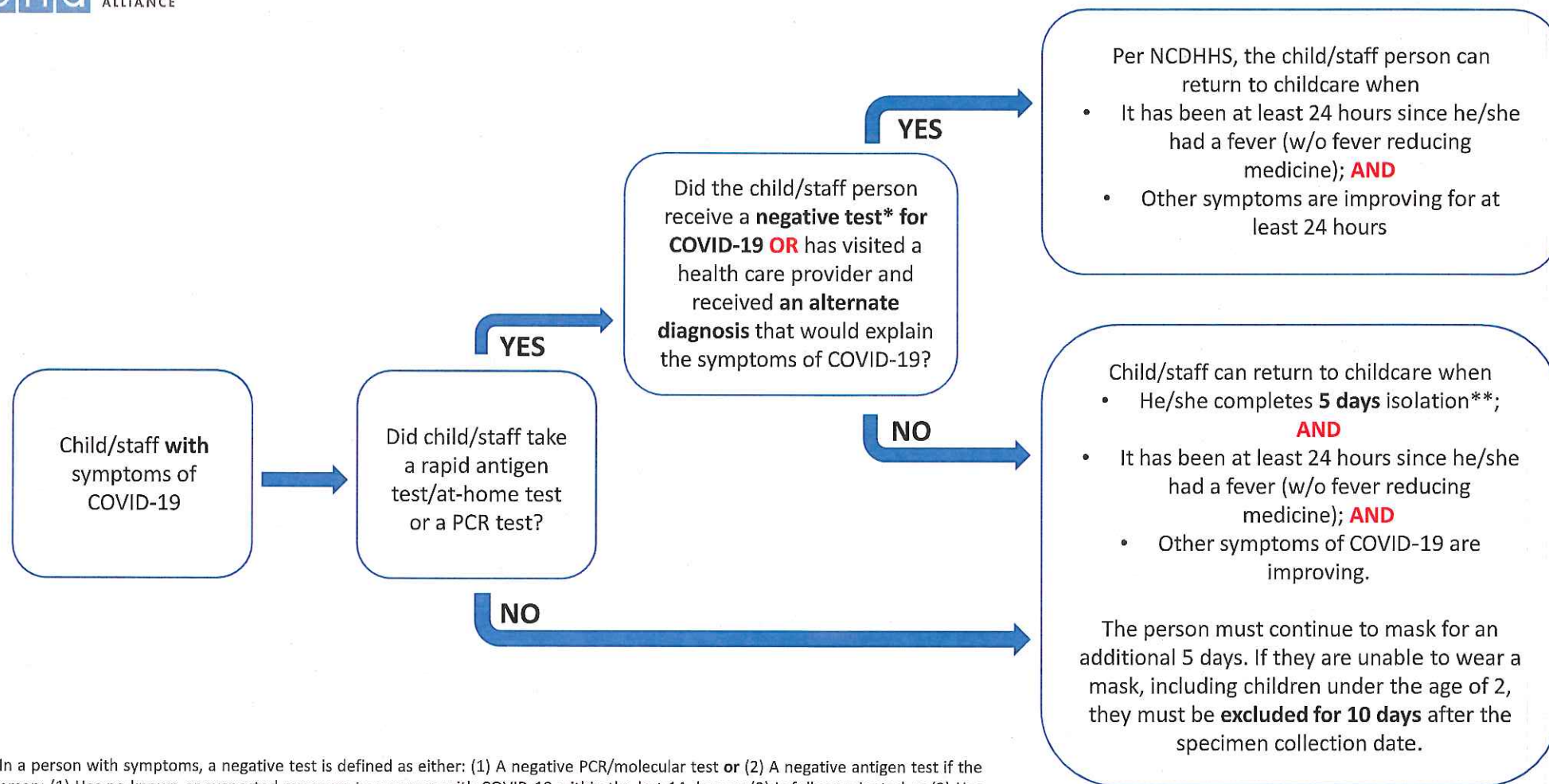


Isolation & Quarantine
Guidance for Childcare
Settings
(Updated Jan. 2022)





*In a person with symptoms, a negative test is defined as either: (1) A negative PCR/molecular test or (2) A negative antigen test if the person: (1) Has no known or suspected exposure to a person with COVID-19 within the last 14 days or (2) Is fully vaccinated or (3) Has had a laboratory confirmed COVID-19 infection in the last 3 months.

**For individuals exposed, day of exposure is considered day 0. For cases, day of symptom onset is day 0 or day of specimen collection for cases with no symptoms.

Child/staff
person has
been in **close
contact** with
someone **with**
COVID-19

Is the child between **ages 5-17** and have
they completed a primary series of
COVID-19 vaccines?

OR

Is the staff person **18 years of age or
older** and have they received their
primary series **AND** booster, if eligible, of
COVID-19 vaccines?

Has the child/staff had confirmed
COVID-19 **within the last 90 days**
(tested positive with using a viral test)?

Was child/staff in close contact with
someone with a confirmed case of COVID-
19, in which **both individuals** were
wearing a mask the entire time?

Answer each of
these questions
to the left to
determine the
best guidance to
follow.

Answered **NO** to **1+**

Person must be excluded from childcare for
5 days after exposure**.

The person may return to childcare after
exclusion if asymptomatic but must
continue to wear a **mask for an additional 5
days**, for a total of 10 days after exposure.
They should test on day 5, if possible.

If symptoms occur, person should
immediately isolate until a test either
confirms COVID-19, or a negative result
rules it out.

If the person is unable to wear a mask,
including children under the age of 2, they
must be **excluded for 10 days** after the last
day of exposure.

Answered **YES** to **ALL**

Person does not need to be excluded from
childcare if they have had no symptoms.
Person must **mask for 10 days** after exposure
and should get tested on day 5, if possible.

If the person cannot wear a mask, they must
be **excluded for 10 days** after exposure.

